

Soybean forage summary



	Median	Normal min	Normal max	Count
Moisture	61.98	26.22	80.3	129
CP	19.62	10.49	27.29	127
ADICP %CP	9.41	4.65	19.73	120
NDICPss %CP	14.66	3.58	28.19	79
SP%CP	41.27	10.22	70.49	120
Ammonia CPE%CP*	7.23	3.43	30.59	35
ADF	33.75	24.66	50.45	126
aNDF	41.48	28.79	62.19	127
aNDFom	39.42	26.86	62.93	86
Lignin	7.14	3.47	11.63	79
uNDFom12	23.51	14.65	41.59	8
uNDFom24	20.72	15.12	42.25	29
uNDFom30	19.85	10.59	37.29	53
uNDFom120	17.25	12.29	27.11	16
uNDFom240	17.3	9.24	34.01	79
NDFDom12	30.57	23.52	49.29	8
NDFDom24	45.73	23.91	58.7	29
NDFDom30	46.43	24.51	68.38	53
NDFDom120	52.63	34.42	71.43	16
NDFDom240	54.43	36.57	71.9	79
Sugar(WSC)	3.71	0.01	9	120
Starch	2.81	0.1	7.6	120

Serving the testing needs of agriculture since 1958

Comprehensive analyses of feed, forage, soil, water, molds and mycotoxins

Arcadia, WI • Stratford, WI • De Pere, WI • St. Cloud, MN • Battle Creek, MI

217 E. Main • Arcadia, WI 54612
 P (608) 323-2123 • F (608) 323-2184

www.dairylandlabs.com

Soybean forage summary



DAIRYLAND
Laboratories, Inc.

	Median	Normal min	Normal max	Count
Fat(EE)	4.03	0.58	8.4	83
TFA	1.56	0.3	3.08	79
16:0 Palmitic %TFA	22.82	12.17	35.67	79
18:0 Stearic %TFA	3.33	0.91	7.66	79
18:1 Oleic %TFA	5.61	3.23	18.37	79
18:2 Linoleic %TFA	25	17.7	34.58	79
18:3 Linolenic %TFA	40.94	11.23	55.35	79
Ash	10.46	5.21	16.49	81
Ca	1.25	0.78	1.69	124
P	0.38	0.22	0.52	124
Mg	0.4	0.25	0.54	124
K	2.18	0.87	3.57	124
S	0.27	0.12	0.4	124
Lactic*	4.49	0	7.15	35
Acetic*	1.78	0	5.01	35
Butyric*	0.39	0	2.55	35

*Fermented samples only

Serving the testing needs of agriculture since 1958

Comprehensive analyses of feed, forage, soil, water, molds and mycotoxins

217 E. Main • Arcadia, WI 54612
P (608) 323-2123 • F (608) 323-2184

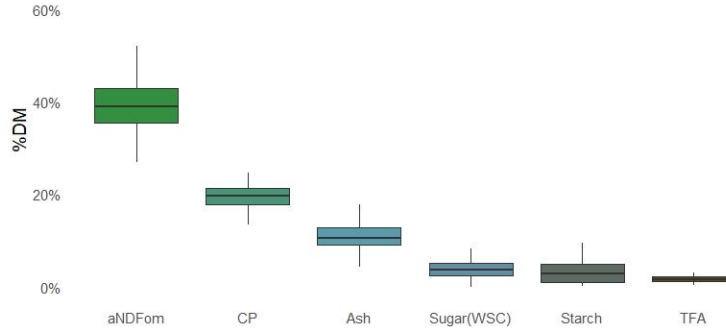
Arcadia, WI • Stratford, WI • De Pere, WI • St. Cloud, MN • Battle Creek, MI

www.dairylandlabs.com

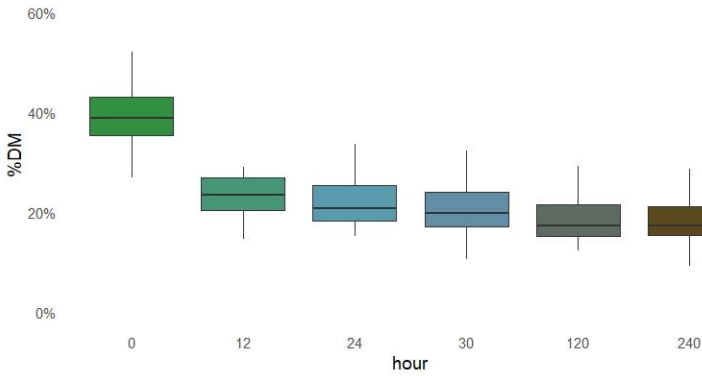
Soybean forage summary



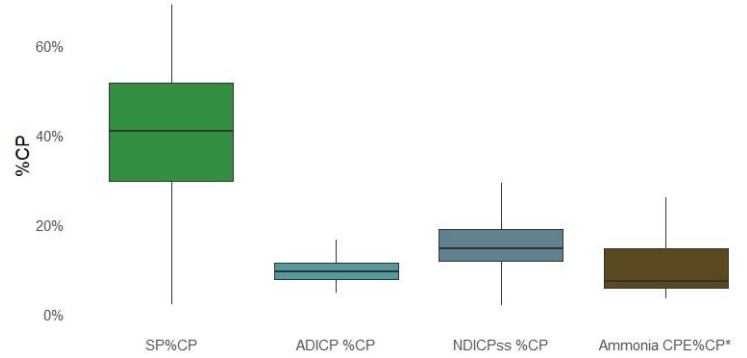
Profile



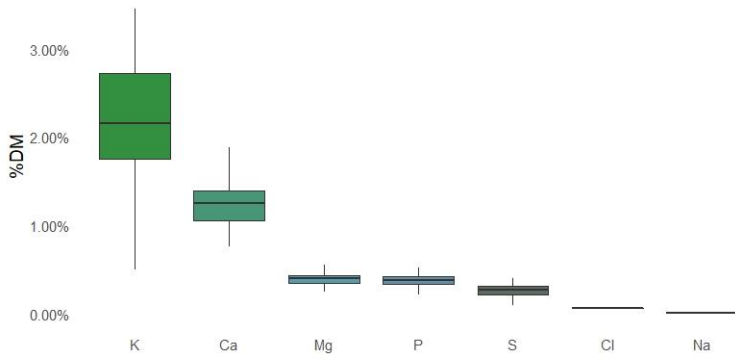
uNDFom



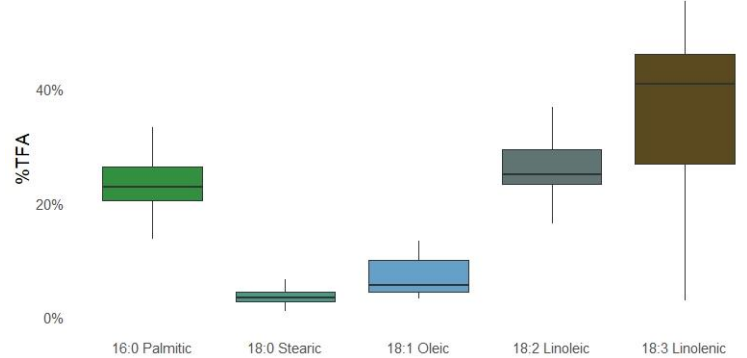
Protein



Macro minerals



Fatty acids



Serving the testing needs of agriculture since 1958

Comprehensive analyses of feed, forage, soil, water, molds and mycotoxins