

# High moisture corn summary



**DAIRYLAND**  
Laboratories, Inc.

	Median	Normal min	Normal max	Count
<b>Moisture</b>	28.84	18.77	39.8	4474
<b>CP</b>	7.98	6.37	9.69	4341
<b>ADICP %CP</b>	5.98	1.05	10.44	4271
<b>SP%CP</b>	29.19	9.02	53.26	4273
<b>Ammonia CPE%CP*</b>	1.47	0.09	5.69	1981
<b>ADF</b>	2.72	0.98	4.72	4295
<b>aNDF</b>	7.43	4.04	11.21	4295
<b>aNDFom</b>	7.06	3.29	23.61	26
<b>Sugar(WSC)</b>	1.79	0.36	3.46	4273
<b>Starch</b>	71.79	66.86	76.31	4307
<b>IVSD7-o</b>	54.49	41.11	70.92	2159
<b>Fat(EE)</b>	3.75	2.86	4.65	3181
<b>TFA</b>	3.4	2.73	4.09	3147
<b>16:0 Palmitic %TFA</b>	13.18	12.42	14	3146
<b>18:0 Stearic %TFA</b>	1.15	0.72	1.78	3146
<b>18:1 Oleic %TFA</b>	28.39	27.05	29.6	3146
<b>18:2 Linoleic %TFA</b>	53.85	52.35	55.36	3146
<b>18:3 Linolenic %TFA</b>	1.57	1.21	1.95	3146
<b>Ash</b>	1.48	0.83	2.22	3171
<b>Ca</b>	0.03	0.01	0.07	4283
<b>P</b>	0.3	0.23	0.37	4297
<b>Mg</b>	0.12	0.09	0.15	4297
<b>K</b>	0.42	0.32	0.52	4297
<b>S</b>	0.08	0.05	0.12	88
<b>Na</b>	0.01	0	0.07	42
<b>Lactic*</b>	0.2	0	0.94	2042
<b>Acetic*</b>	0.19	0	0.5	2042

*Serving the testing needs of agriculture since 1958*

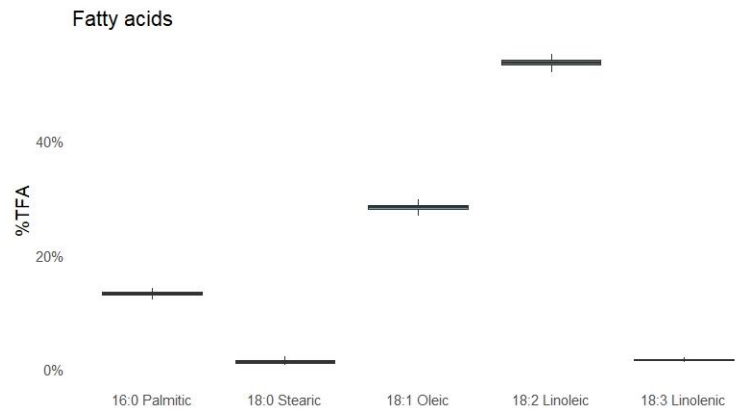
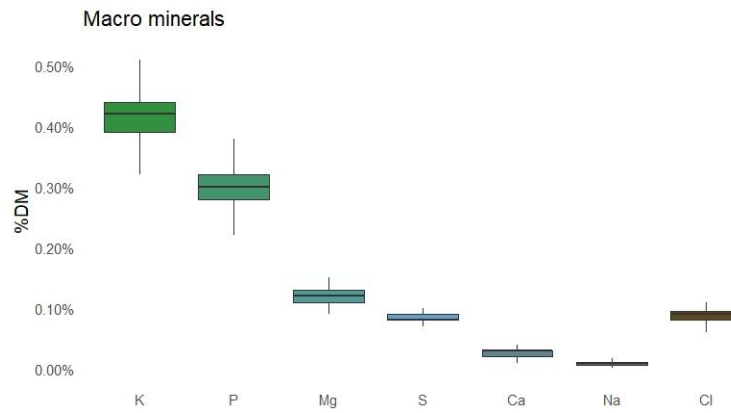
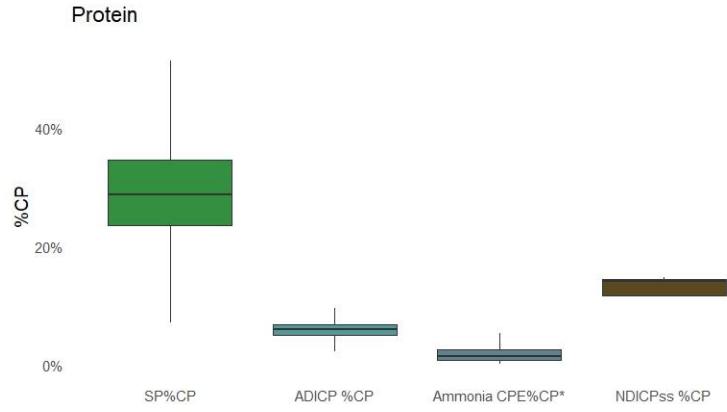
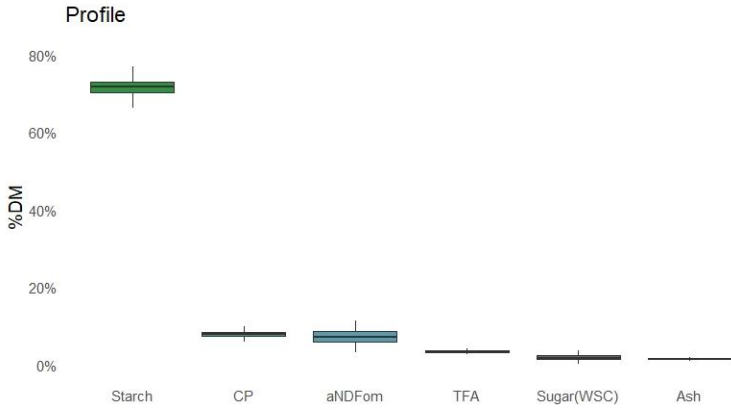
*Comprehensive analyses of feed, forage, soil, water, molds and mycotoxins*

217 E. Main • Arcadia, WI 54612  
P (608) 323-2123 • F (608) 323-2184

Arcadia, WI • Stratford, WI • De Pere, WI • St. Cloud, MN • Battle Creek, MI

[www.dairylandlabs.com](http://www.dairylandlabs.com)

# High moisture corn summary



Serving the testing needs of agriculture since 1958

Comprehensive analyses of feed, forage, soil, water, molds and mycotoxins

Arcadia, WI • Stratford, WI • De Pere, WI • St. Cloud, MN • Battle Creek, MI

217 E. Main • Arcadia, WI 54612  
 P (608) 323-2123 • F (608) 323-2184

[www.dairylandlabs.com](http://www.dairylandlabs.com)